

**DUCMA**

AISLAMIENTOS INTELIGENTES

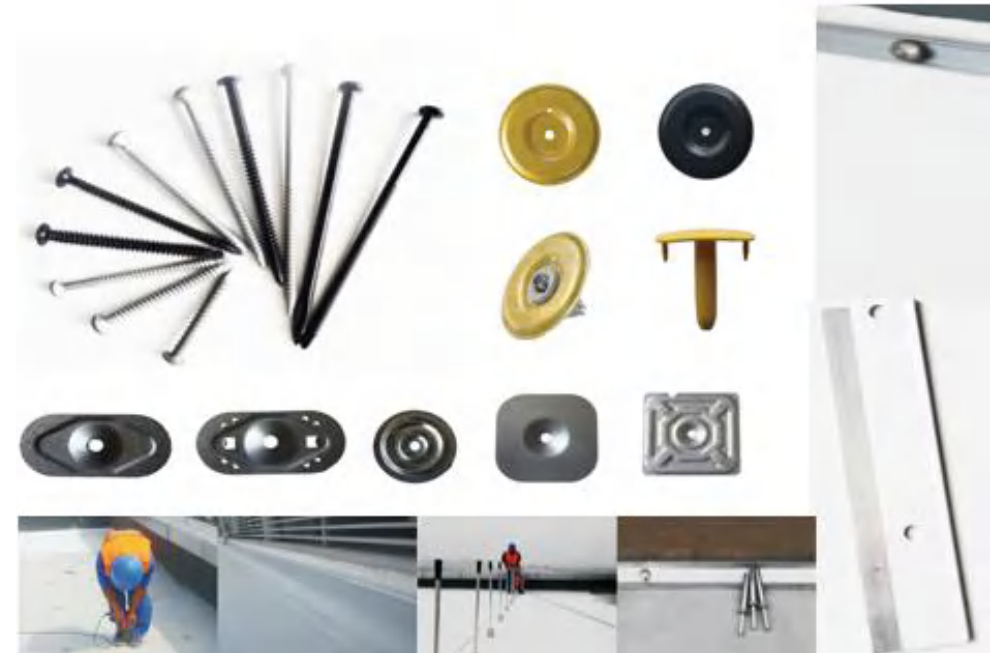
**Waterproof Accessories System**

# We can do for you ...

## PREFORM SYSTEM



## FASTENING



## Material: PVC, TPO, HDPE



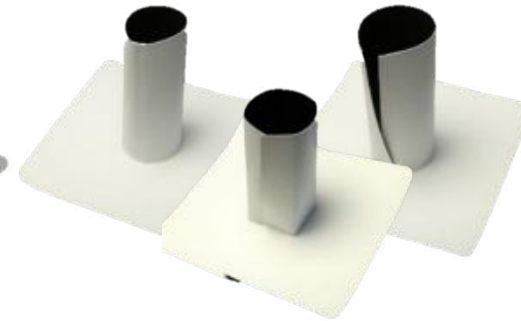
Pile head



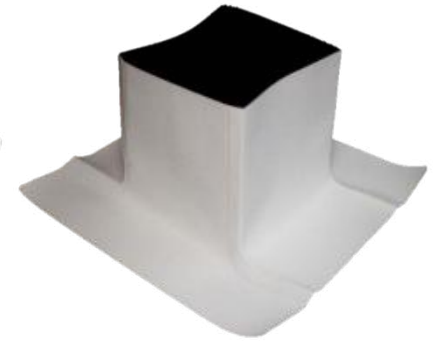
Corners



Cones



wraps



Boxes



Ventilation



Scuppers



Features



Custom



Fastening

# CORNERS



Non-reinforced

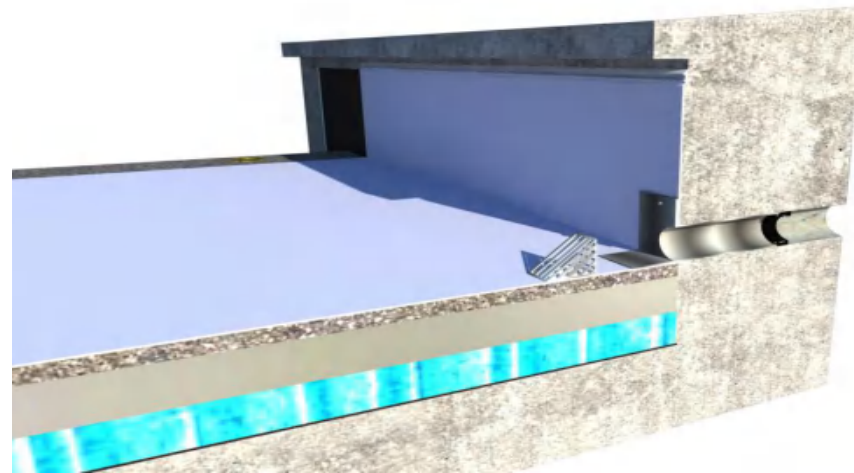
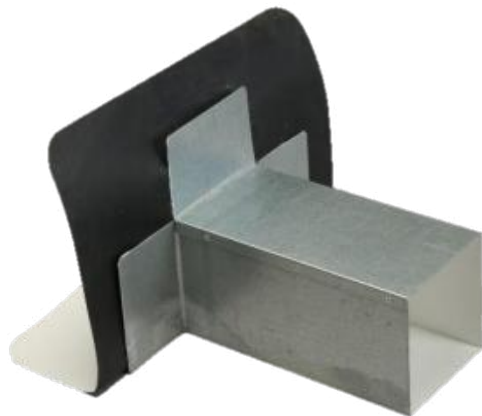


Used in various angles of the inside angle, outside angle



Reinforced

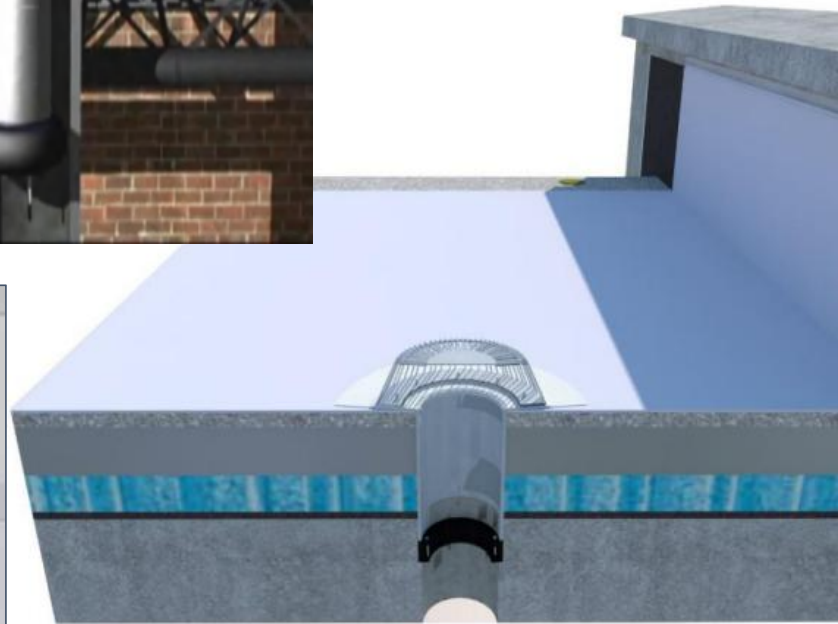
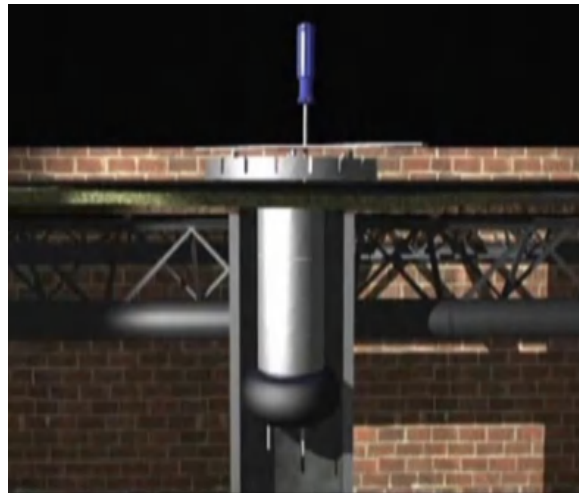
# Though Wall Box Scupper



# Membrana Drain Liners

φ: 35, 55, 75, 95, 115, 125, 155, 175, 195, 220  
Standard as well as custom sizes available.

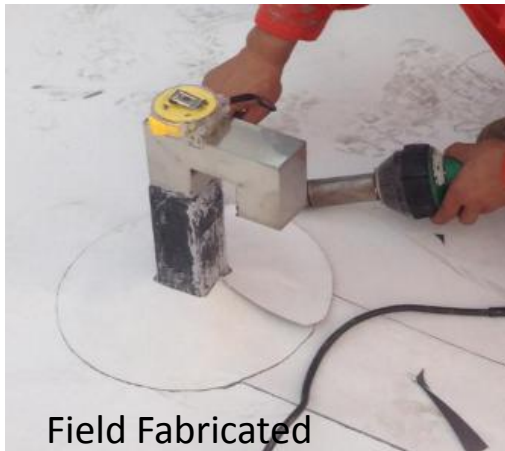






# Wraps

Angled square penetrations are another common issue roofers regularly face.





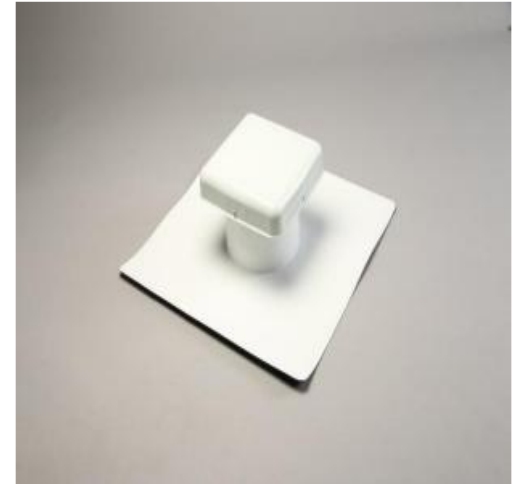




# VENTILATION



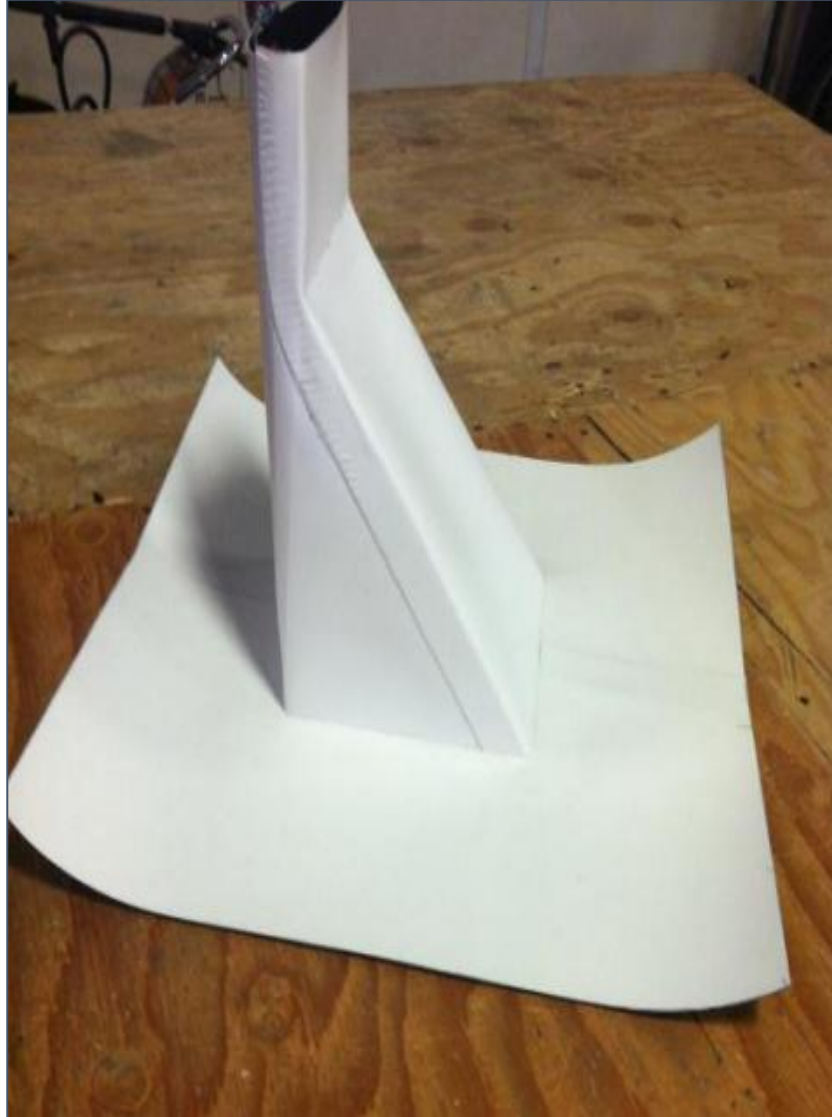
Used in the roof exhaust parts





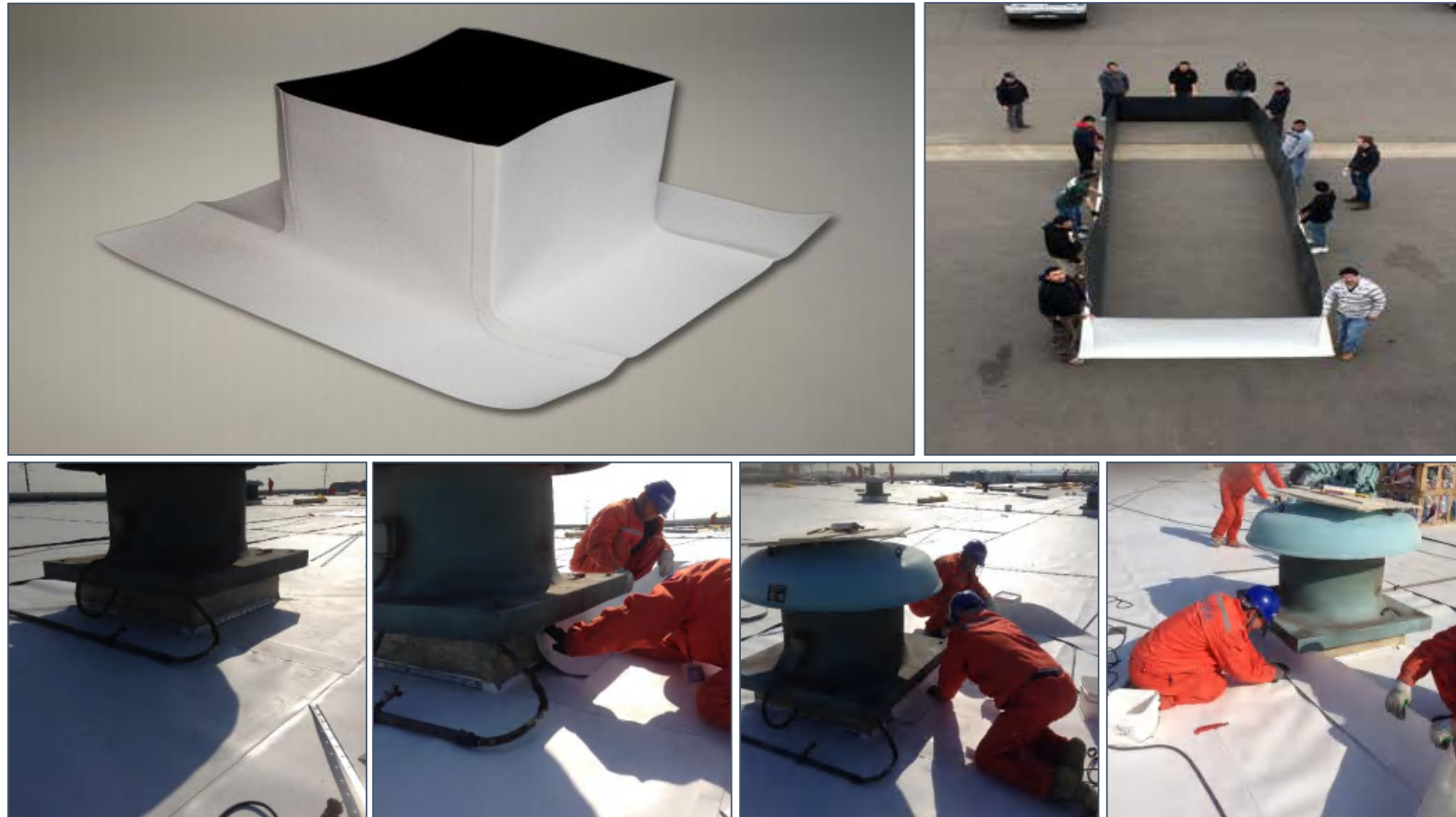


# CUSTOM



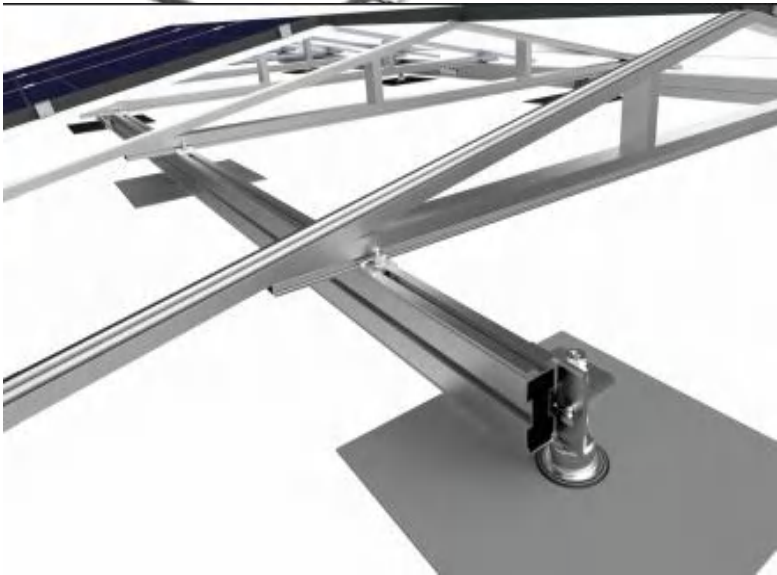
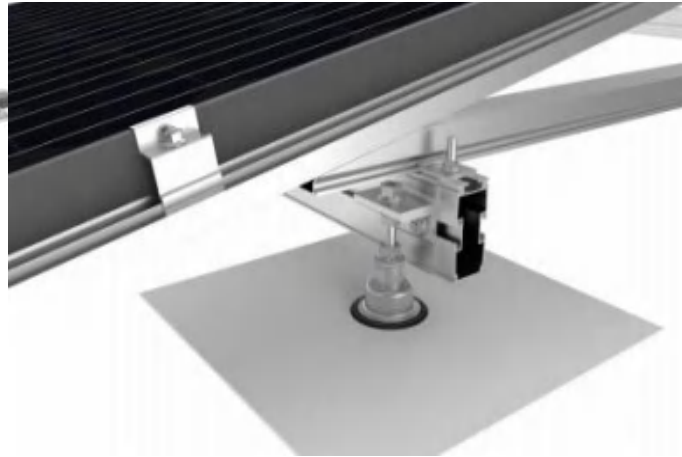
# BOXES

Standard as well as custom sizes available.

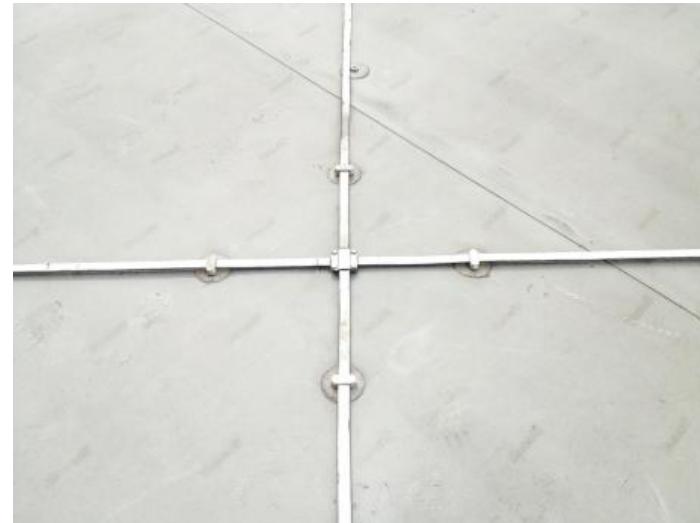




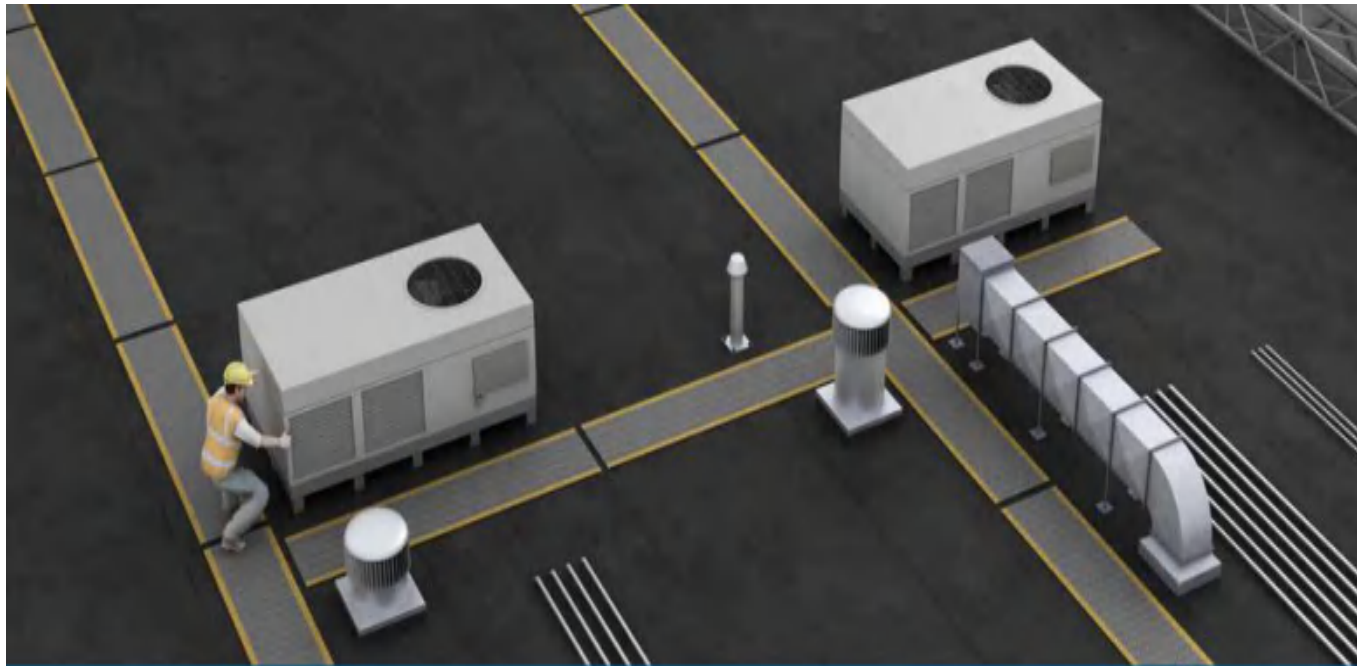
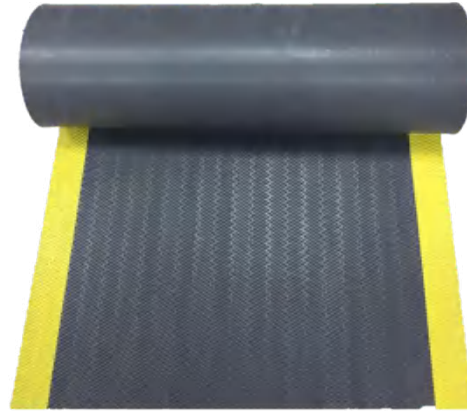
# SOLAR



# LIGHTNING

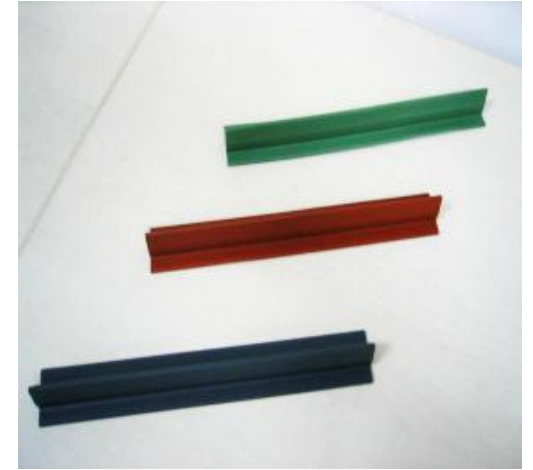


# WALKWAY





# DECORATIVE STRIP



# OTHER



# FASTENING





1. Diameter: 6.3mm

2. Length: 32mm, 50mm, 75mm,  
100mm, 125mm, 150mm, 180mm





# METAL BATTEN - U BAR



WRU1:  
Length: 2m

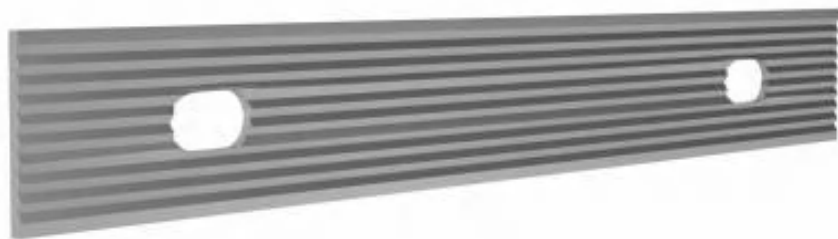
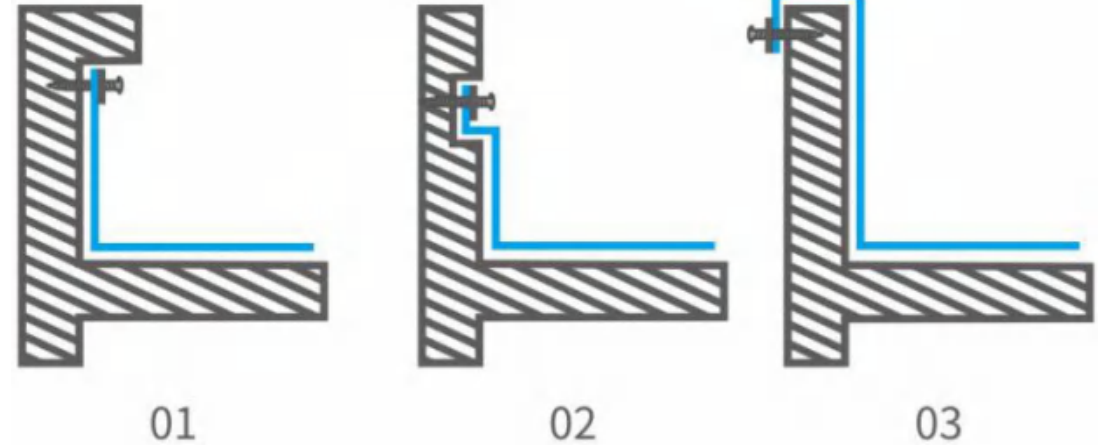


WRU2:  
Length: 2m

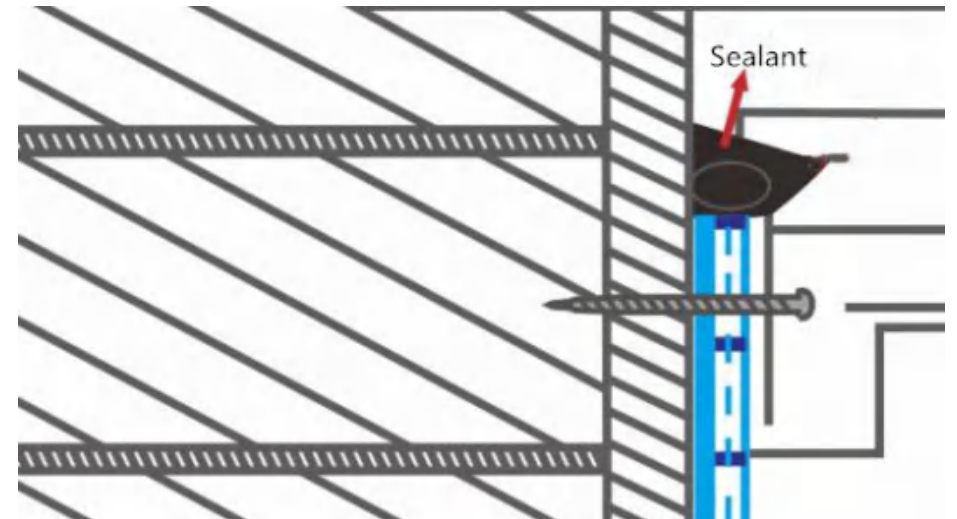
# METAL BATTEN - TERMINATION BAR



WRT1:  
Length: 2m



WRT2:  
Length: 2m



# WASHER



# **DUCMEX**

**AISLAMIENTOS INTELIGENTES**

PEDRO BERNAL POMPA  
CALLE CIRUELOS #2475  
COLONIA VALLE ALTO C.P. 80050  
CULIACÁN, SINALOA

PEDRO.BERNAL@DUCMEX.COM.MX  
(667) 319 9920



**[www.ducmex.com](http://www.ducmex.com)**

